

# VISUAL AID

## ADCO DRAWING REVISION HISTORY

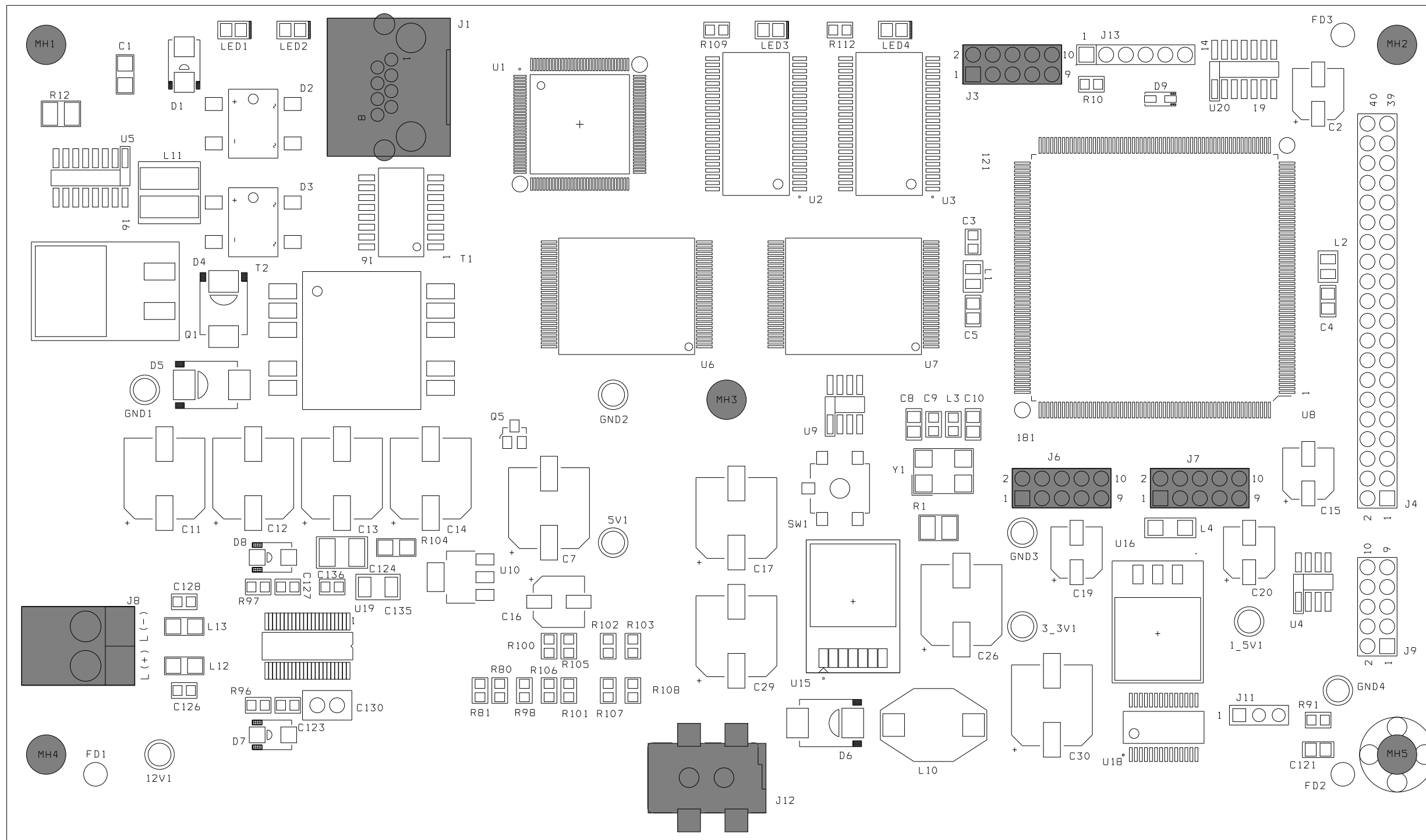
ADCO ITEM#: AS880-490498

ADCO ASSY #: AS247-490495

ADCO REV  
00

DATE	REV.	CHANGES INCORPORATED	CN#	CHG. BY
5/16/06	00	Initial Release	10426	B. Mead

DESCRIPTION: ASSY,



INSTALL DD295-000000 AND DD295-000001 INTO J8 AS SHOWN BELOW



KEEP ALL SHADED AREAS CLEAR OF CONFORMAL COATING

UNLESS OTHERWISE SPECIFIED ON ACTUAL DRAWING  
DIMENSIONS ARE IN INCHES AND TOLERANCES ARE LISTED BELOW.

TOLERANCES ON:  
2 PLACES +/- 0.01  
ANGLES +/- 0.5

PAGE 1 OF 2

# VISUAL AID

## ADCO DRAWING REVISION HISTORY

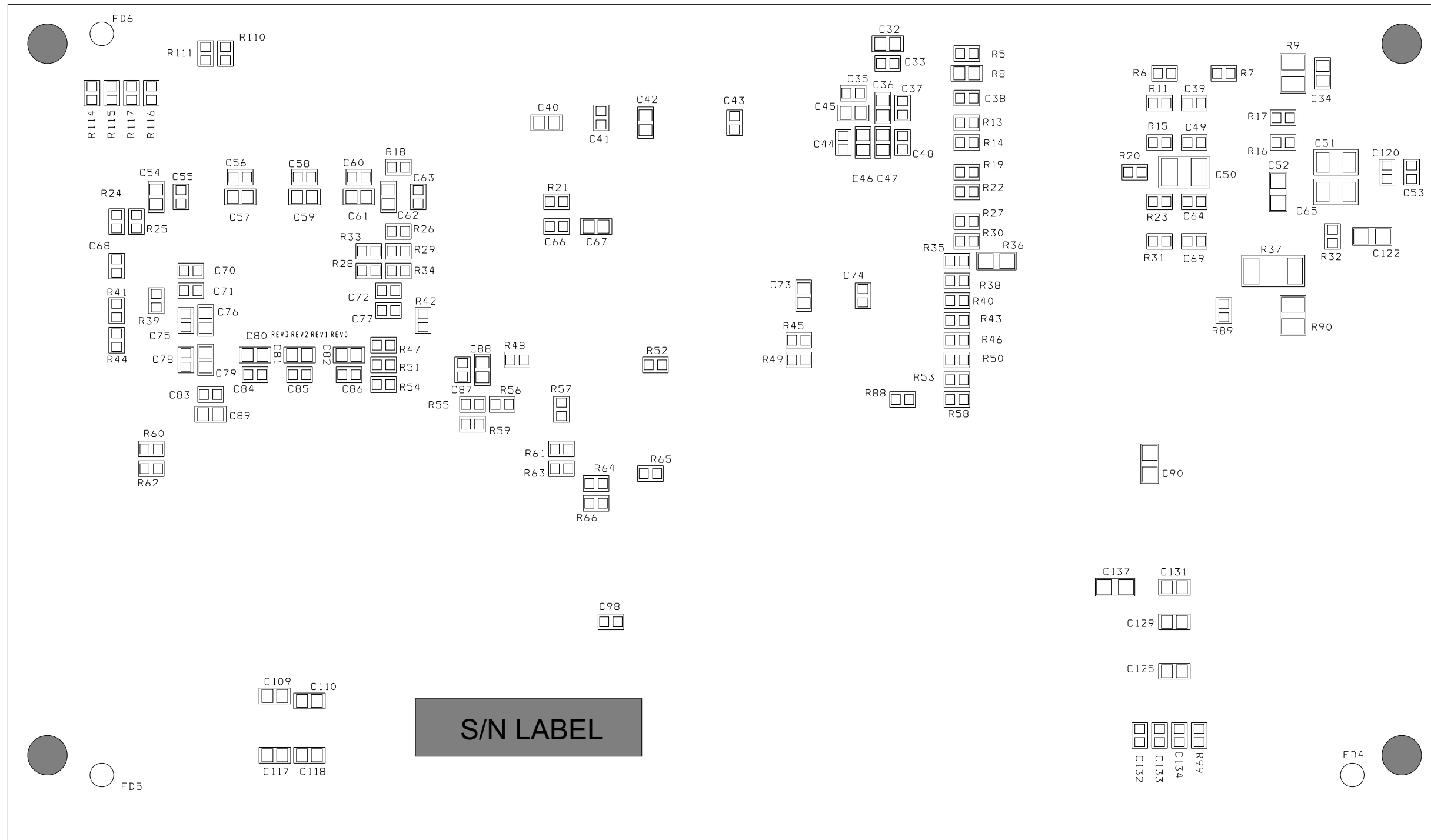
ADCO ITEM#: AS880-490495

ADCO ASSY #: AS247-490495

ADCO REV  
00

DATE	REV.	CHANGES INCORPORATED	CN#	CHG. BY
5/16/06	00	Initial Release	10426	B. Mead

DESCRIPTION: ASSY, IP SPEAKER



UNLESS OTHERWISE SPECIFIED ON ACTUAL DRAWING  
DIMENSIONS ARE IN INCHES AND TOLERANCES ARE LISTED BELOW.

TOLERANCES ON:  
2 PLACES +/- 0.01  
ANGLES +/- 0.5

PAGE 2 OF 2